

# Cable-side soldering type female connector PCR-S( )FS

1.27 mm pitch connectors

For cables

Soldering

EMI-Filtered



## ● Configuration of product Part No.

**PCR-S ( ) FS**

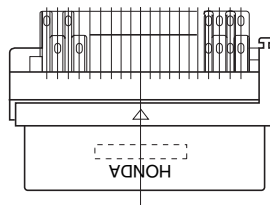
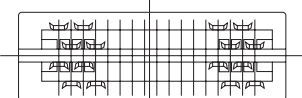
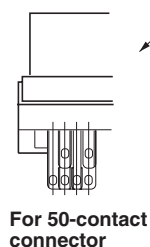
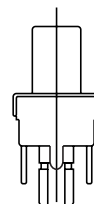
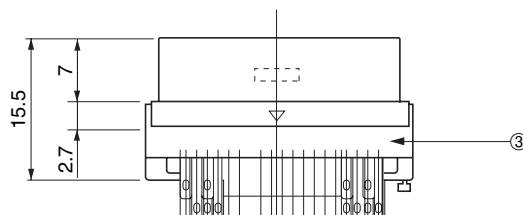
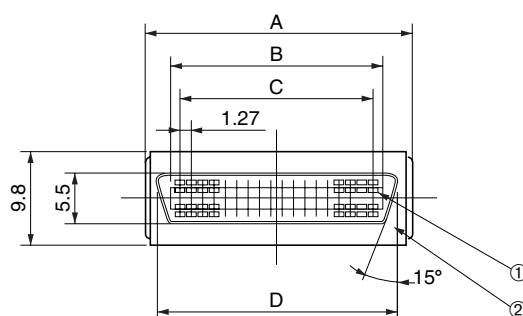
① ② ③

① Series name

② No. of contacts: 20, 28, 36 or 50

③ Type of connector

FS: Soldering type, female, AWG#20 MAX.



## ● Components

①	Contacts
②	Shell
③	Insulator

## ● Dimensions

Part No.	A	B	C	D
PCR-S20FS	19.40	13.35	11.43	16.25
PCR-S28FS	24.48	18.43	16.51	21.33
PCR-S36FS	29.56	23.51	21.59	26.41
PCR-S50FS	38.45	32.40	30.48	35.30

Mating connectors: PCR-E series of PCB-side right-angle DIP type connectors

PCR-E series of PCB-side right-angle SMT type connectors

PCR-E series of PCB-side straight DIP type connectors

PCR-E series of PCB-side straight SMT type connectors

Others

Wire  
wrapping

Crimping

Soldering

IDC

Press-in

SMT

DIP