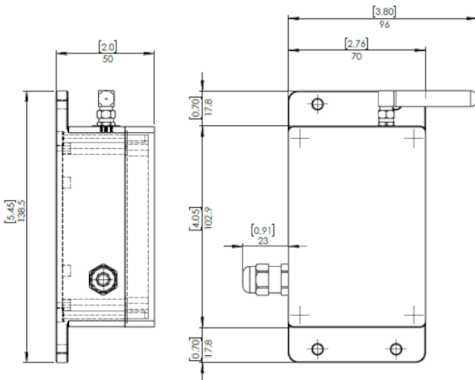




DIMENSIONS



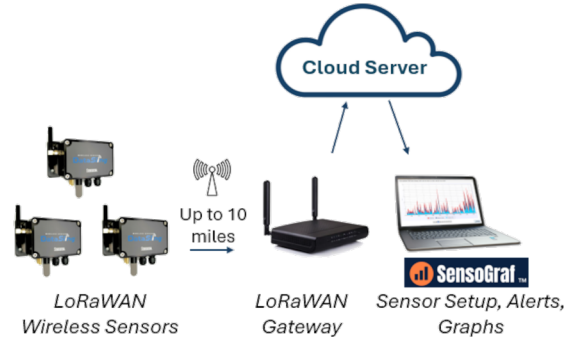
SPECIFICATIONS

Battery Type: CR123A (x2)
Frequency Bands: US915
Wireless Technology: LoRaWAN Class A
Max Receive Sensitivity: -130dBm
Wireless Range: Up to 10 miles*
Minimum Interval: 10 minutes
Battery Life: 2.5 to 5 years
Antenna: External Antenna
Wireless Security: AES-128
Operating Temperature: -40° to 149°F
 (-40° to 65°C)
Enclosure Rating: IP 65
Weight: 90g

*Clear line-of-sight. Transmit distances will vary.

- Long Life Battery Powered
- Transmit Long Distances
- Easy 3-Step Setup Process

Sensocon's® LoRaWAN® Wireless Current Sensors provide accurate and reliable measurements suitable for a wide range of applications. They leverage the robust LoRaWAN protocol to transmit data efficiently over long distances, securely and dependably.



Applications

- Industrial Process Control
- Pressure Transducer Monitoring
- Flow Meter Monitoring
- Level Measurement
- Transmitter Integration
- Gas Monitoring
- Valve Position Feedback
- Pump/Motor Monitoring

MODEL NUMBERS

| Model Number | Type | Range | Accuracy |
|--------------|----------------|--------|----------|
| WS-AI01 | Analog Current | 0-20mA | +/- 0.5% |

Also available in multi-variable e.g. temperature + pressure + current. See www.sensocon.com for more details.

Sensograf.com

EASY TO SET UP - EASY TO USE



- New sensor setup
- Trending / dashboards
- Data storage
- Set up notifications
- Sampling interval changes



Measure

Set up Sensors in Minutes: Designed for simplicity, ease of installation and trouble-free use.



Trend

Gain Insights: Use Sensograf™ to visualize data via customizable dashboards.



Alert

Know When Something Isn't Right: Easily set up text and/or email alerts to notify key personnel when predefined conditions are met.



Act

Information Where and How Needed: Customize reporting interval to balance power consumption and data frequency needs.