



Connectors > Terminal Junction Modules & Accessories > Terminal Junction Modules



Terminal Junction System Component Type: **Grounding Module Environmental Screw Assembly**

Compatible With Contact Size: **20**

Operating Temperature Range: **-67 – 392 °C**

Features

Product Type Features

Terminal Junction System Component Type	Grounding Module Environmental Screw Assembly
---	---

Body Features

Connector Seal Material	Elastomer
-------------------------	-----------

Contact Features

Compatible With Contact Size	20
------------------------------	----

Usage Conditions

Operating Temperature Range	-67 – 392 °C
-----------------------------	--------------

Product Compliance

[For compliance documentation, visit the product page on TE.com>](#)

EU RoHS Directive 2011/65/EU	Not Compliant
EU ELV Directive 2000/53/EC	Compliant with Exemptions
China RoHS 2 Directive MIIT Order No 32, 2016	有害物质含量超出标准 Restricted Substance(s) Above Threshold
EU REACH Regulation (EC) No. 1907/2006	Current ECHA Candidate List: JUNE 2025 (250) Candidate List Declared Against: JAN 2025 (247) SVHC > Threshold: Decamethylcyclopentasiloxane (D5) (1% in Component Part) Pb (1% in Component Part)



Octamethylcyclotetrasiloxane (D4) (1% in Component Part)

Article Safe Usage Statements:
Do not eat, drink or smoke when using this product. Wash thoroughly after handling. Recycle if possible and dispose of the article by following all applicable governmental regulations relevant to your geographic location.

Halogen Content	Not Yet Reviewed for halogen content
Solder Process Capability	Not reviewed for solder process capability

Product Compliance Disclaimer

This information is provided based on reasonable inquiry of our suppliers and represents our current actual knowledge based on the information they provided. This information is subject to change. The part numbers that TE has identified as EU RoHS compliant have a maximum concentration of 0.1% by weight in homogenous materials for lead, hexavalent chromium, mercury, PBB, PBDE, DBP, BBP, DEHP, DIBP, and 0.01% for cadmium, or qualify for an exemption to these limits as defined in the Annexes of Directive 2011/65/EU (RoHS2). Finished electrical and electronic equipment products will be CE marked as required by Directive 2011/65/EU. Components may not be CE marked. Additionally, the part numbers that TE has identified as EU ELV compliant have a maximum concentration of 0.1% by weight in homogenous materials for lead, hexavalent chromium, and mercury, and 0.01% for cadmium, or qualify for an exemption to these limits as defined in the Annexes of Directive 2000/53/EC (ELV). Regarding the REACH Regulation, the information TE provides on SVHC in articles for this part number is based on the latest European Chemicals Agency (ECHA) 'Guidance on requirements for substances in articles' posted at this URL: <https://echa.europa.eu/guidance-documents/guidance-on-reach>

Also in the Series | DEUTSCH CTJ

Terminal Junction Modules(94)

Customers Also Bought

TE Part #879222-000
202K132-25/86-0

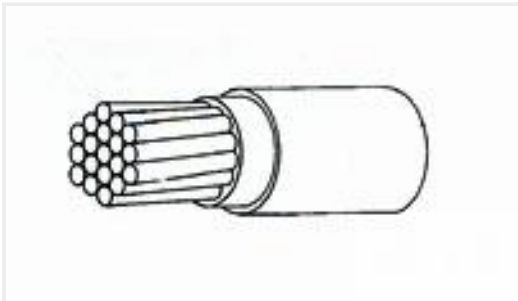
TE Part #CTS-S20-20
CONT SOC ASSY

TE Part #D369-R66-NP1
369 6 WAY REC, CRIMP, PIN

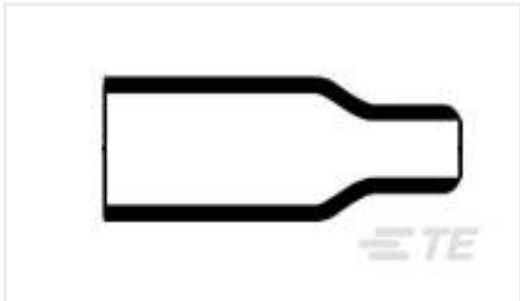
TE Part #YCTJ122E04FC015000
ELEC MODULE



TE Part #651105-000
[S03-03-R-100](#)



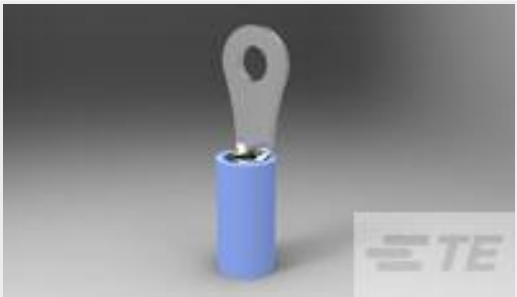
TE Part #218539-001
[22759/41-18-9](#)



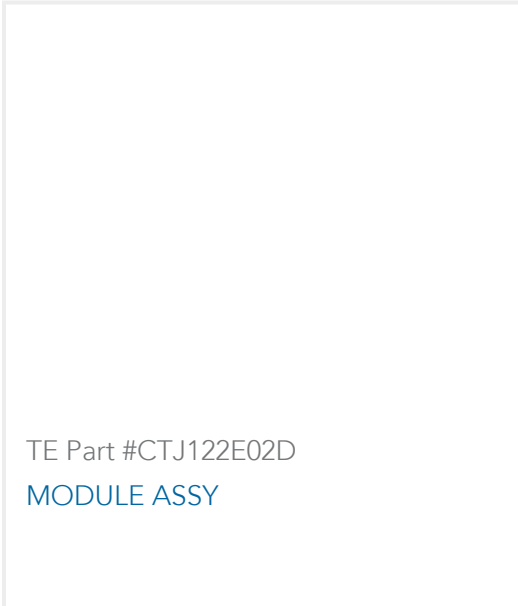
TE Part #479613-000
[202A121-25/225-0](#)



TE Part #324484
[SPARE WIRE CAP,NAT .048-.075 INS.](#)



TE Part #328996
[TERMINAL,PIDG R 16-14 4](#)



TE Part #CTJ122E02D
[MODULE ASSY](#)

Documents

Product Drawings

[MODULE ASSY](#)

English

CAD Files

[3D PDF](#)

3D

Customer View Model

[ENG_CVM_CVM_CTJ720K01B-7067_99.2d_dxf.zip](#)

English

Customer View Model

[ENG_CVM_CVM_CTJ720K01B-7067_99.3d_igs.zip](#)

English

Customer View Model

[ENG_CVM_CVM_CTJ720K01B-7067_99.3d_stp.zip](#)

English

By downloading the CAD file I accept and agree to the [Terms and Conditions](#) of use.

Datasheets & Catalog Pages

[DEUTSCH CTJ Series Common Termination System](#)

English