

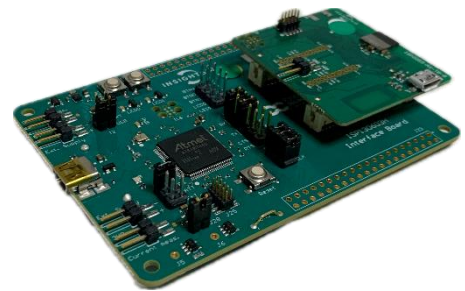
ISP1807 DK

Data Sheet



Development Boards

In order to assist clients in developing their Bluetooth Smart solutions based on the ISP1807, Insight SiP offers associated Test Boards and Evaluation Boards. They provide full HW and SW necessary development environment for product developers to start working on their solutions. Time to market is saved by avoiding starting from a blank sheet of paper.

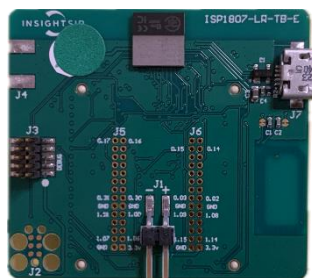


Test Boards

The Test Board consists of a module mounted on a PCB for prototyping and testing purpose. It includes a connection to the Insight SiP Interface Board provided in ISP1807 Evaluation Boards (see nearby).

It also offers test points for all IOs and can be used in conjunction with:

- A Nordic Development kit through the "Debug" connector
- An external J-Link programmer

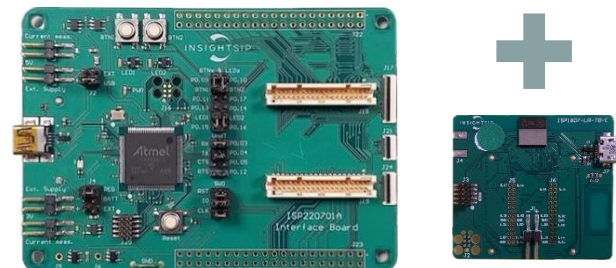


How to order

- **ISP1807-LR-TB**
Compliant with LR version and integrating 1 M Flash / 256 K RAM memories

Evaluation Boards

- One Interface Board with integrated J-Link OB JTAG/SWD Emulator
- One Test Board with ISP1807
- One NFC antenna printed on board



How to order

- **ISP1807-LR-EB**
Compliant with LR version and integrating 1 M Flash / 256 K RAM memories