

15 KLB 3

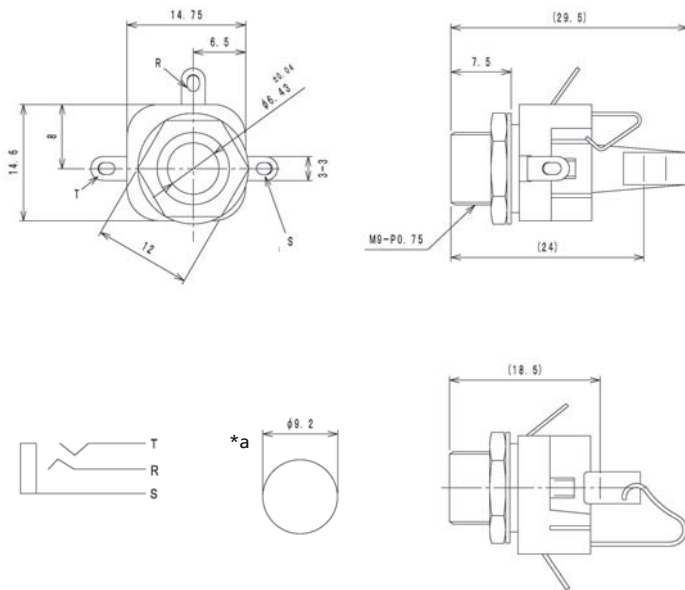
Jack connectors



Jack chassis socket acc. to JIS C 6560 JC63J3A, 6.35 mm, 3 poles/stereo, with solder eyes, for back side mounting

15

KLB 3



*a port in mounting plate

Environmental conditions

Temperature range -20 °C/+70 °C

Materials

Insulating body PC, V-2 according to UL94
Contact Cu alloy, nickel-plated
Hexagonal nut steel, nickel-plated
Washer steel, nickel-plated

Mechanical data

Mating cycles ≥ 5000
Insertion force 5–30 N
Withdrawal force 5–30 N

Electrical data (at T_{amb} 20 °C)

Contact resistance ≤ 50 m Ω
Rated current 2 A
Rated voltage 34 V AC/DC
Rated impulse voltage 500 V/60 s
Insulation resistance ≥ 100 M Ω

Associated products

Counterparts
☑ KLS 3

15

KLB 3

Designation	Pole Number	PU (Pieces)	MDQ (Pieces)
KLB 3	3	100	400

Packaging:

in bulk, in a cardboard box or a plastic bag