



Wire Protection & Management > Heat Shrink Shapes > Heat Shrink Boots > Bulbous Heat Shrink Boots: Lipped, Straight



Body Orientation: **Straight**

Molded Part Shape Code: **202**

Lipped: **Yes**

Material Code: **25**

Material Systems Code: **25**

[All Bulbous Heat Shrink Boots: Lipped, Straight \(358\)](#)

Features

Configuration Features

Lipped	Yes
Adhesive Requirement	Adhesive Purchased Separately

Body Features

Primary Product Material	Fluid Resistant Modified Elastomer
Material Code	25
Material Systems Code	25

Housing Features

Body Orientation	Straight
------------------	----------

Dimensions

Connector or Backshell Outside Diameter	12 mm, 14 mm, 16 mm [.47 in][.55 in][.62 in]
Compatible Cable Diameter (Max)	6 mm, 7 mm, 8 mm, 9 mm, 10 mm [.23 in][.27 in][.314 in][.35 in][.39 in]
Compatible Cable Diameter Range	5.6 – 13 mm [5.6 – 14 in]

Usage Conditions

Operating Temperature Range	-75 – 150 °C [-103 – 302 °F]
Resistance Protection	Long-Term Fluid Exposure at High Temperatures

Other

Molded Part Shape Code	202
------------------------	-----

Product Compliance

[For compliance documentation, visit the product page on TE.com>](#)

EU RoHS Directive 2011/65/EU	Compliant
EU ELV Directive 2000/53/EC	Out of Scope
China RoHS 2 Directive MIIT Order No 32, 2016	有害物质含量符合标准要求 No Restricted Substance(s) Above Threshold
EU REACH Regulation (EC) No. 1907/2006	Current ECHA Candidate List: JUNE 2025 (250) Candidate List Declared Against: JUNE 2025 (250) Does not contain REACH SVHC
Halogen Content	Not Low Halogen - contains Br or Cl > 900 ppm.
Solder Process Capability	Not applicable for solder process capability

Product Compliance Disclaimer

This information is provided based on reasonable inquiry of our suppliers and represents our current actual knowledge based on the information they provided. This information is subject to change. The part numbers that TE has identified as EU RoHS compliant have a maximum concentration of 0.1% by weight in homogenous materials for lead, hexavalent chromium, mercury, PBB, PBDE, DBP, BBP, DEHP, DIBP, and 0.01% for cadmium, or qualify for an exemption to these limits as defined in the Annexes of Directive 2011/65/EU (RoHS2). Finished electrical and electronic equipment products will be CE marked as required by Directive 2011/65/EU. Components may not be CE marked. Additionally, the part numbers that TE has identified as EU ELV compliant have a maximum concentration of 0.1% by weight in homogenous materials for lead, hexavalent chromium, and mercury, and 0.01% for cadmium, or qualify for an exemption to these limits as defined in the Annexes of Directive 2000/53/EC (ELV). Regarding the REACH Regulation, the information TE provides on SVHC in articles for this part number is based on the latest European Chemicals Agency (ECHA) 'Guidance on requirements for substances in articles' posted at this URL: <https://echa.europa.eu/guidance-documents/guidance-on-reach>

Compatible Parts



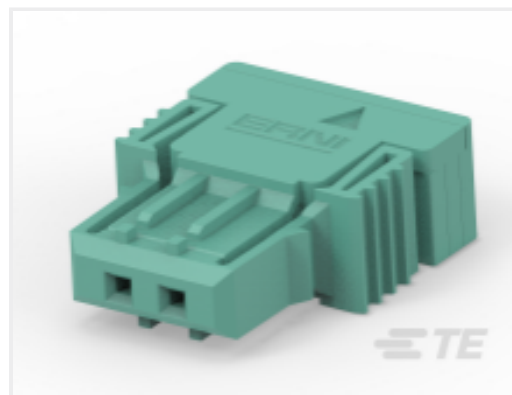
Customers Also Bought



TE Part #331643-001
SSC-1/239



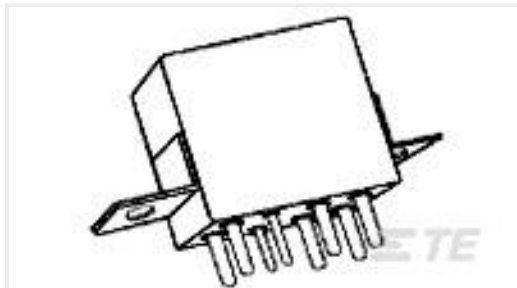
TE Part #364199-E
SRCBUG A 2,54 2 2 CSI 163 E1 ADV J
2 324



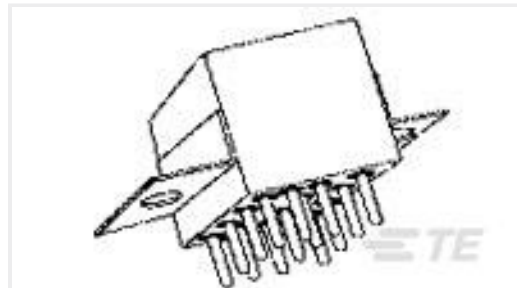
TE Part #364200-E
SRCBUG A 2,54 2 2 CSI 164 E1 ADV J
2 324



TE Part #364254-E
SRCBUG A 2,54 2 8 CSI 112 E1 ADV J
2 324



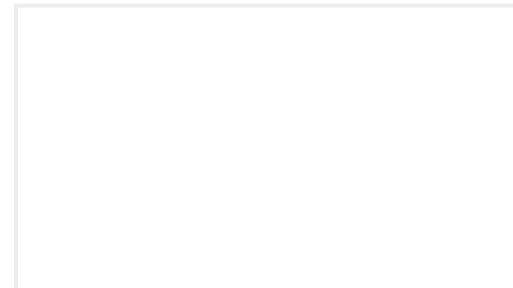
TE Part #6-1617758-9
FCB-205-AY4



TE Part #9-1617760-6
FCB-405-AY4



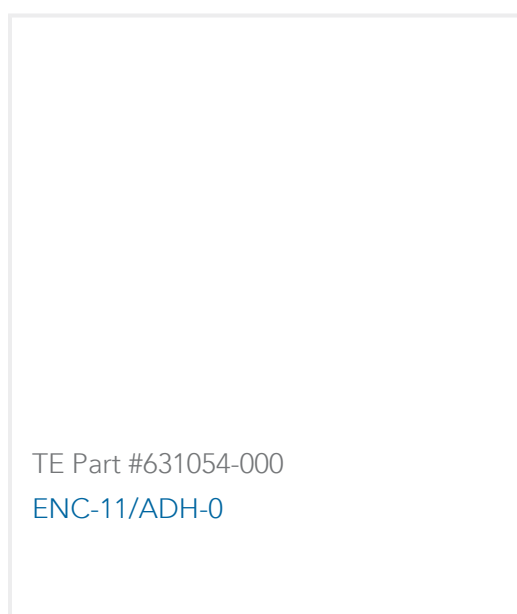
TE Part #6-2176414-3
7W STD M/OX 5% 7K5



TE Part #223762-000
ENC-33/ADH-0



TE Part #047688-000
ENC-22/ADH-0



TE Part #631054-000
ENC-11/ADH-0

Documents

Product Drawings

[202K121-25L-0](#)

English

CAD Files

Customer View Model

[ENG_CVM_CVM_CV7360-000_A.2d_dxf.zip](#)

English

Customer View Model

[ENG_CVM_CVM_CV7360-000_A.3d_igs.zip](#)

English

Customer View Model

[ENG_CVM_CVM_CV7360-000_A.3d_stp.zip](#)

English

[3D PDF](#)

3D

By downloading the CAD file I accept and agree to the [Terms and Conditions](#) of use.

Datasheets & Catalog Pages



[1654025_Sec4_-25](#)

English

[Raychem Molded Parts Visual Guide](#)

English

Product Specifications

RAYCHEM BRAND MOULDED COMPONENTS, LIGHT WEIGHT, FLAME RETARDED, SEMI-RIGID, HEAT SHRINKABLE, ELASTOMER (-25L)

English