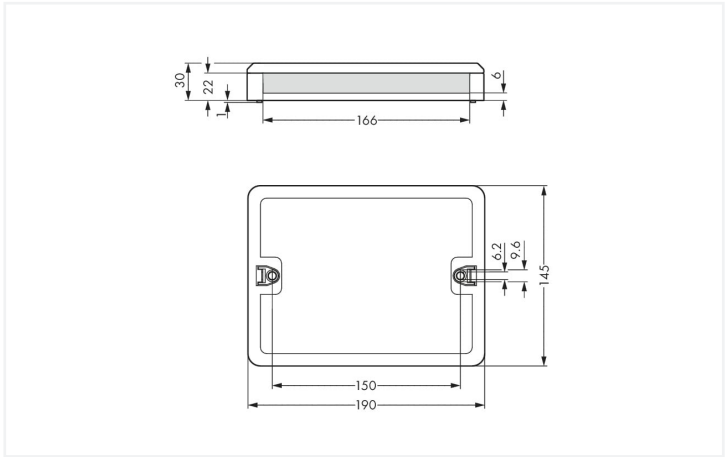




Color: ■ black



Dimensions in mm

Empty housings WINSTA®

The empty housings from the WINSTA® product line guarantees you the greatest possible flexibility in electrical installation. You can rely on the level of quality of WINSTA® components from WAGO for your electrical installation accessories too.

Push-in CAGE CLAMP® spring pressure connection technology – pluggable installation instead of laborious screw connections!

WINSTA® is the pluggable connection system that is perfectly tailored to the strict requirements of electrical installation. It offers error-free installation of cables and components, quickly and reliably. Now you can also reduce installation expenses without compromising safety and quality: with protection against mismatching eliminates the need for servicing and prevents unnecessary downtime.

- intuitive marking
- products perfectly tailored to your requirements guarantee safe use
- rapid, structured electrical installation

Notes		
Note		For easy cable connection, do not arrange the connectors directly next to each other in the distribution box.

Physical data		
Width		190 mm / 7.48 inches
Height		30 mm / 1.181 inches
Depth		145 mm / 5.709 inches

Mechanical data	
Use	Self-assembly
Design	Standard
Mounting type	Wall, screw mount Installation on mounting plate



Material data	
Note (material data)	<a href="#">Information on material specifications can be found here</a>
Color	black
Insulation material (main housing)	Polyamide (PA66)
Flammability class per UL94	V0
Fire load	5.684 MJ
Weight	195.4 g

Environmental requirements	
Processing temperature	-5 ... +40 °C
Continuous operating temperature	-35 ... +85 °C
Note on continuous operating temperature	Insulating parts for temperatures ≤ 105 °C

Commercial data	
eCl@ss 10.0	27-44-06-03
eCl@ss 9.0	27-44-06-03
ETIM 9.0	EC002567
ETIM 8.0	EC002567
PU (SPU)	1 pcs
Packaging type	Box
Country of origin	DE
GTIN	4055143315630
Customs tariff number	85366990990

Environmental Product Compliance	
RoHS Compliance Status	Compliant,No Exemption

Downloads

Environmental Product Compliance

Compliance Search

Environmental Product Compliance 899-631

↓

Documentation			
Bid Text			
899-631	19.02.2019	xml 2.94 KB	<div>↓</div>
899-631	16.03.2015	doc 24.00 KB	<div>↓</div>

1 Compatible Products

1.1 Optional Accessories

1.1.1 Installation

1.1.1.1 Mounting accessories



**Item No.: 770-630**  
Fixing pin; for distribution boxes; Plastic; gray



**Item No.: 890-302**  
Mounting carrier; 2-pole; for sockets and plugs; Plastic; gray



**Item No.: 890-303**  
Mounting carrier; 3-pole; for sockets and plugs; Plastic; gray



**Item No.: 890-304**  
Mounting carrier; 4-pole; for sockets and plugs; Plastic; gray



**Item No.: 890-305**  
Mounting carrier; 5-pole; for sockets and plugs; Plastic; gray



**Item No.: 899-680**  
Mounting plate; for distribution boxes; gray

Installation Notes

Installation



Application



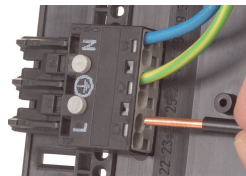
The set includes: 1 bottom, 1 lid, 2 side-walls and 16 mounting pins.



Remove unrequired sections from the side-walls.



Unassigned slots and spaces are closed by inserting a side wall.



Using mounting pins to secure WINSTA® MIDI connectors in a distribution box .



Using adapters to install WINSTA® MINI connectors in a distribution box