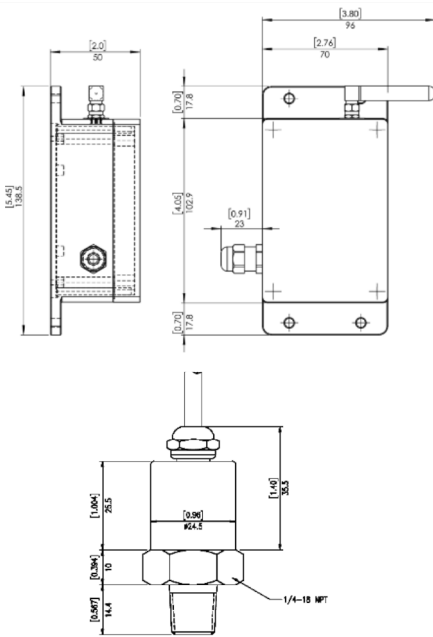




DIMENSIONS



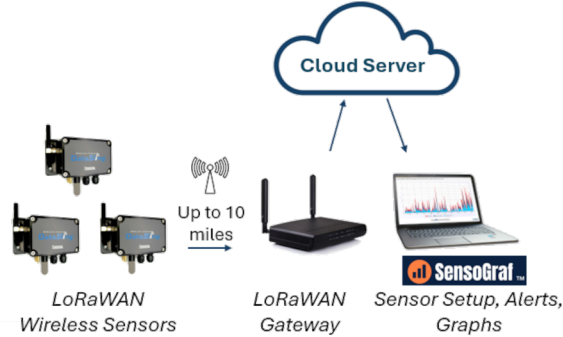
SPECIFICATIONS

Battery Type: CR123A (x2)
Frequency Bands: US915
Wireless Technology: LoRaWAN Class A
Max Receive Sensitivity: -130dBm
Wireless Range: Up to 10 miles*
Minimum Interval: 10 minutes
Battery Life: 2.5 to 5 years
Antenna: External Antenna
Wireless Security: AES-128
Operating Temperature: -4° to 149°F (-20° to 65°C)
Enclosure Rating: IP 65
Process Connection: 1/4"NPTM
Weight: 90g

*Clear line-of-sight. Transmit distances will vary.

- Multiple Pressure Ranges Available
- Transmit Long Distances
- Easy 3-Step Setup Process

Sensocon's® LoRaWAN® Wireless Pressure Sensors provide accurate and reliable measurements suitable for a wide range of applications. They leverage the robust LoRaWAN protocol to transmit data efficiently over long distances, securely and dependably.



Applications

- Pump/Compressor Monitoring
- Boiler/Steam Systems
- Water/Wastewater
- Hydraulic Systems
- Process Control

MODEL NUMBERS

Model Number	Type	Pressure	Max Press.	Accuracy
WS-G005	Gauge	0-5 PSI	12.5 PSI	+/- 0.5% FS
WS-G015	Gauge	0-15 PSI	37 PSI	+/- 0.5% FS
WS-G030	Gauge	0-30 PSI	75 PSI	+/- 0.5% FS
WS-G100	Gauge	0-100 PSI	250 PSI	+/- 0.5% FS
WS-G300	Gauge	0-300 PSI	750 PSI	+/- 0.5% FS
WS-G1K0	Gauge	0-1000 PSI	2500 PSI	+/- 0.5% FS

Also available in multi-variable e.g. pressure + humidity/temperature + voltage. See www.sensocon.com for more details.

Sensograf.com

EASY TO SET UP - EASY TO USE



- New sensor setup
- Trending / dashboards
- Data storage
- Set up notifications
- Sampling interval changes



Measure

Set up Sensors in Minutes: Designed for simplicity, ease of installation and trouble-free use.



Trend

Gain Insights: Use Sensograf™ to visualize data via customizable dashboards.



Alert

Know When Something Isn't Right: Easily set up text and/or email alerts to notify key personnel when predefined conditions are met.



Act

Information Where and How Needed: Customize reporting interval to balance power consumption and data frequency needs.