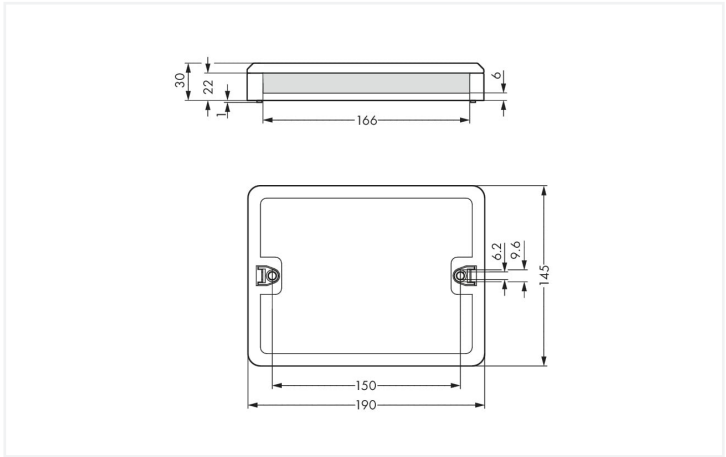




Color: ■ black



Dimensions in mm

Empty housings WINSTA®

Realize your installation project with ease: The empty housings from the WINSTA® product line is the product of your choice for error-free electrical installation. An extensive range of accessories rounds out the WINSTA® product line from WAGO.

WINSTA® solutions for your electrical installation – protected against mismating and maintenance-free

WINSTA® is the pluggable connection system that is perfectly tailored to the strict requirements of electrical installation. It allows fast, secure and, above all, error-free installation of components and cables. Choose quality and durability – with protection against mismating from WAGO makes the electrical installation of electrical components visibly easier.

- clear slot identification for easy commissioning
- saves time, since no wiring is required at the construction site
- rapid, structured electrical installation

Notes		
Note		For easy cable connection, do not arrange the connectors directly next to each other in the distribution box.

Physical data		
Width		190 mm / 7.48 inches
Height		30 mm / 1.181 inches
Depth		145 mm / 5.709 inches

Mechanical data		
Use		Self-assembly
Design		with integrated DIN-rail
Mounting type		Wall, screw mount Installation on mounting plate



Material data	
Note (material data)	<a href="#">Information on material specifications can be found here</a>
Color	black
Insulation material (main housing)	Polyamide (PA66)
Flammability class per UL94	V0
Fire load	5.763 MJ
Weight	186.8 g

Environmental requirements	
Processing temperature	-5 ... +40 °C
Continuous operating temperature	-35 ... +85 °C
Note on continuous operating temperature	Insulating parts for temperatures ≤ 105 °C

Commercial data	
eCl@ss 10.0	27-44-06-03
eCl@ss 9.0	27-44-06-03
ETIM 9.0	EC002567
ETIM 8.0	EC002567
PU (SPU)	1 pcs
Packaging type	Box
Country of origin	DE
GTIN	4055143315623
Customs tariff number	85366990990

Environmental Product Compliance	
RoHS Compliance Status	Compliant,No Exemption

Downloads

Environmental Product Compliance

Compliance Search

Environmental Product Compliance 899-632

↓

Documentation			
Bid Text			
899-632	19.02.2019	xml 3.10 KB	↓
899-632	16.03.2015	doc 24.00 KB	↓

1 Compatible Products
1.1 Optional Accessories
1.1.1 Installation
1.1.1.1 Mounting accessories



**Item No.: 770-630**  
Fixing pin; for distribution boxes; Plastic; gray



**Item No.: 890-302**  
Mounting carrier; 2-pole; for sockets and plugs; Plastic; gray



**Item No.: 890-303**  
Mounting carrier; 3-pole; for sockets and plugs; Plastic; gray



**Item No.: 890-304**  
Mounting carrier; 4-pole; for sockets and plugs; Plastic; gray



**Item No.: 890-305**  
Mounting carrier; 5-pole; for sockets and plugs; Plastic; gray



**Item No.: 899-680**  
Mounting plate; for distribution boxes; gray

Installation Notes
Installation



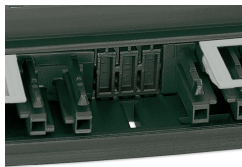
Application
-------------



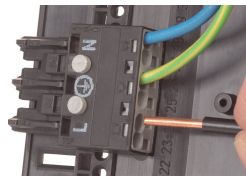
The set includes: 1 bottom, 1 lid, 2 side-walls and 16 mounting pins.



Remove unrequired sections from the side-walls.



Unassigned slots and spaces are closed by inserting a sidewall.



Using mounting pins to secure WINSTA® MIDI connectors in a distribution box .



Using adapters to install WINSTA® MINI connectors in a distribution box