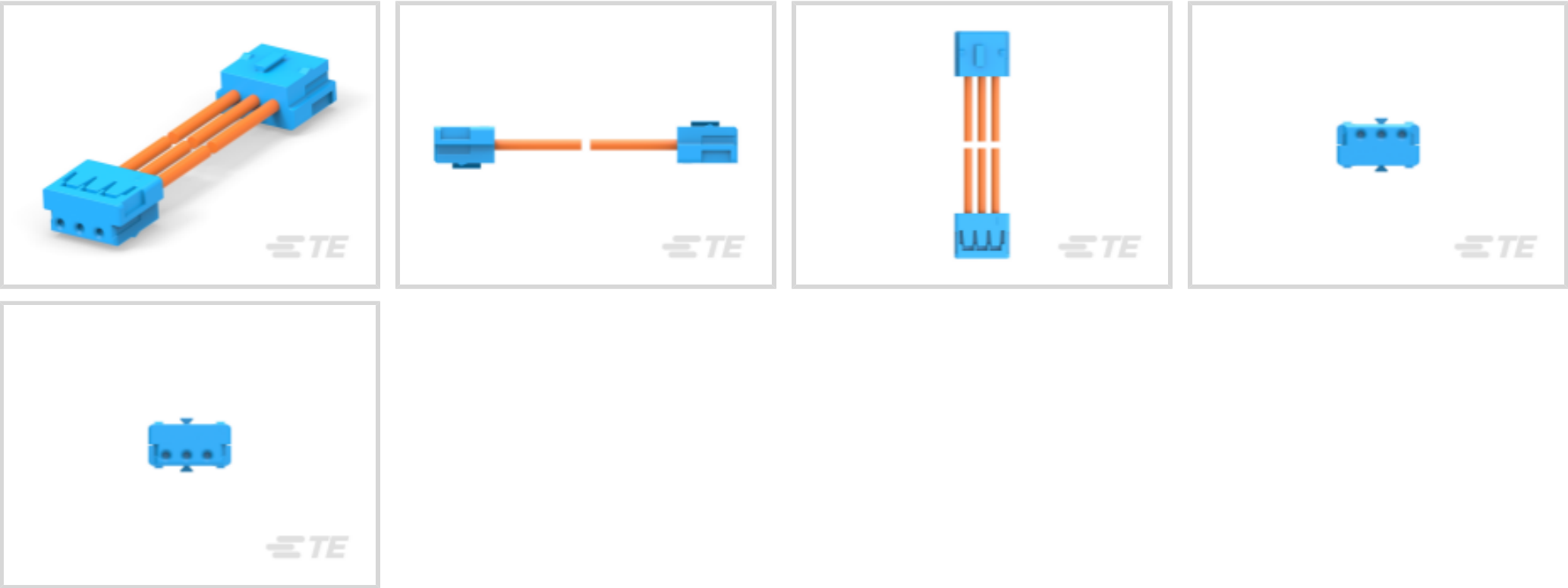




Cable Assemblies > Copper Cable Assemblies > Internal I/O Cable Assemblies



Cable Assembly Type: AMP CT to AMP CT

Cable Style: Discrete Pair

Number of Positions: 3

Number of Signal Positions: 3

Wire Size: 24 AWG

Features

Product Type Features

Cable Assembly Type	AMP CT to AMP CT
Cable Style	Discrete Pair

Configuration Features

Number of Positions	3
Number of Signal Positions	3

Dimensions

Wire Size	24 AWG
-----------	--------

Other

Cable Assembly Length	.3 m [.98 ft]
-----------------------	---------------

Product Compliance

For compliance documentation, visit the product page on TE.com>

EU RoHS Directive 2011/65/EU	Compliant
EU ELV Directive 2000/53/EC	Out of Scope
China RoHS 2 Directive MIIT Order No 32, 2016	有害物质含量符合标准要求 No Restricted



	Substance(s) Above Threshold
EU REACH Regulation (EC) No. 1907/2006	Current ECHA Candidate List: JUNE 2025 (250) Candidate List Declared Against: JUNE 2025 (250) Does not contain REACH SVHC
Halogen Content	Not Low Halogen - contains Br or Cl > 900 ppm.
Solder Process Capability	Not reviewed for solder process capability

Product Compliance Disclaimer

This information is provided based on reasonable inquiry of our suppliers and represents our current actual knowledge based on the information they provided. This information is subject to change. The part numbers that TE has identified as EU RoHS compliant have a maximum concentration of 0.1% by weight in homogenous materials for lead, hexavalent chromium, mercury, PBB, PBDE, DBP, BBP, DEHP, DIBP, and 0.01% for cadmium, or qualify for an exemption to these limits as defined in the Annexes of Directive 2011/65/EU (RoHS2). Finished electrical and electronic equipment products will be CE marked as required by Directive 2011/65/EU. Components may not be CE marked. Additionally, the part numbers that TE has identified as EU ELV compliant have a maximum concentration of 0.1% by weight in homogenous materials for lead, hexavalent chromium, and mercury, and 0.01% for cadmium, or qualify for an exemption to these limits as defined in the Annexes of Directive 2000/53/EC (ELV). Regarding the REACH Regulations, TE’s information on SVHC in articles for this part number is still based on the European Chemical Agency (ECHA) ‘Guidance on requirements for substances in articles’(Version: 2, April 2011), applying the 0.1% weight on weight concentration threshold at the finished product level. TE is aware of the European Court of Justice ruling of September 10th, 2015 also known as O5A (Once An Article Always An Article) stating that, in case of ‘complex object’, the threshold for a SVHC must be applied to both the product as a whole and simultaneously to each of the articles forming part of its composition. TE has evaluated this ruling based on the new ECHA “Guidance on requirements for substances in articles” (June 2017, version 4.0) and will be updating its statements accordingly.

Compatible Parts



TE Part # 292254-3  
CT RELAY HDR ASSY 3P NAT



TE Part # CAT-3980407-RHDRRA  
CT 2mm Header Assembly: Right Angle



TE Part # 292173-3  
CT BOX HDR H SMT 3P O/TAPE BLA



TE Part # CAT-3983178-PHBXVD  
CT 2mm Post Header Asmbly: Box V DIP



TE Part # 292172-3  
CT POST HDR ASSY 3P IN-TUBE BL



TE Part # 292156-3  
CT RELAY HDR ASSY FREE HANGING

Customers Also Bought



TE Part #810315-SF  
FN3268-30-33



TE Part #T4145015041-001  
M12 R/A F PNLREAR STAMPED PIN A-CODE 4P



TE Part #166052-1  
TD 20 F CRIMP SOCKET WIRE SIZE



TE Part #5-166054-1  
HD 20 CONTACTS PIN MINI-



TE Part #167292-1  
09P.HDP20 PLUG ASSY



TE Part #5-747905-5  
9 Rcpt Solder Cup, 30 gold, Ro



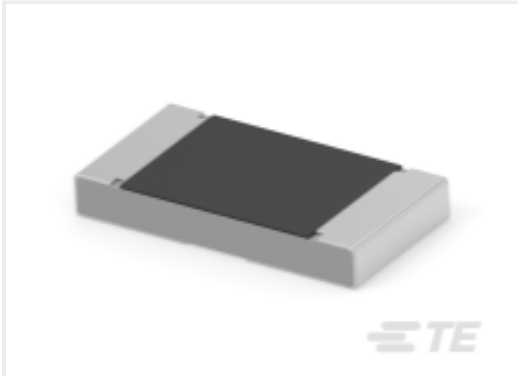
TE Part #826629-5  
AMPMODU II HEADER



TE Part #3-1623932-0  
CFR50 5% 180K



TE Part #2071584-1  
ECK50BH4AAA



TE Part #2176527-9  
3503G 2B 665R 1% 5K RL

Documents

Product Drawings

CT 3P 300MM CABLE ASSEMBLY 2-179228-3

English

CAD Files

Customer View Model

ENG\_CVM\_CVM\_2405869-3\_A.2d\_dxf.zip

English

Customer View Model

ENG\_CVM\_CVM\_2405869-3\_A.3d\_igs.zip

English

3D PDF

3D

Customer View Model

ENG\_CVM\_CVM\_2405869-3\_A.3d\_stp.zip

English

By downloading the CAD file I accept and agree to the [Terms and Conditions](#) of use.

Datasheets & Catalog Pages



2.0MM\_AMP\_CT\_CONNECTOR\_SERIES\_QUICK\_REF\_GUIDE

English