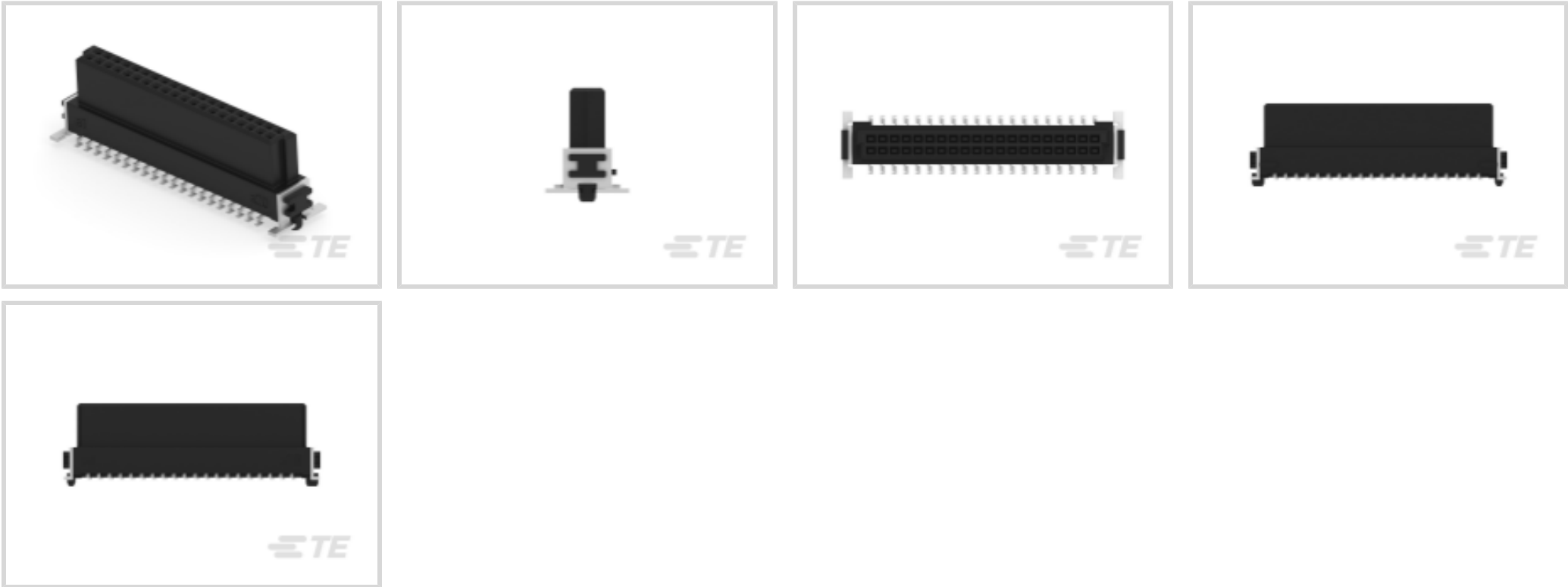




Connectors > PCB Connectors > PCB Headers & Receptacles



PCB Connector Type: **PCB Mount Receptacle**

Connector System: **Board-to-Board**

Number of Positions: **40**

Number of Rows: **2**

Centerline (Pitch): **1.27 mm [.05 in ]**

Features

Product Type Features

Connector Shape	Rectangular
PCB Connector Type	PCB Mount Receptacle
Connector System	Board-to-Board
Header Type	Fully Shrouded
Sealable	No
Connector & Contact Terminates To	Printed Circuit Board
Connector Product Type	Connector Assembly

Configuration Features

Number of Columns	20
Number of Loaded Positions	40
Stacking Configuration	Stack Through
Connector Contact Load Condition	Fully Loaded
Stackable	Yes
Number of Positions	40



Number of Rows	2
PCB Mount Orientation	Vertical
Board-to-Board Configuration	Parallel

Body Features

Connector Profile	Standard
Primary Product Color	Black

Contact Features

PCB Contact Termination Area Plating Material Thickness	4 – 6 µm[157.48 – 236.22 µin]
Contact Shape & Form	Dual Beam
Contact Layout	Matrix
Contact Base Material	Copper Alloy
Contact Mating Area Plating Material	Gold (Au)
Contact Type	Socket
Contact Current Rating (Max)	1.7 A
PCB Contact Termination Area Plating Material	Tin

Termination Features

Termination Method to PCB	Surface Mount
---------------------------	---------------

Mechanical Attachment

Mounting Alignment Feature Length	.75 mm[.029 in]
PCB Mount Retention Type	Location Peg
PCB Mount Alignment Type	Locating Posts
Mating Alignment Type	Polarization
Connector Mounting Type	Board Mount
Mating Alignment	With
PCB Mount Alignment	With
PCB Mount Retention	With

Housing Features

Mating Entry Location	Top
Centerline (Pitch)	1.27 mm[.05 in]
Housing Material	LCP

Dimensions

Connector Width	7.2 mm[.283 in]
-----------------	-----------------



Connector Height	9.05 mm[.356 in]
Profile Height from PCB	9.05 mm[.356 in]
Connector Length	30.48 mm[1.2 in]
Row-to-Row Spacing	1.27 mm[.05 in]
Stack Height	9.05 mm[.356 in]

Usage Conditions

Operating Temperature (Max)	125 °C[257 °F]
Operating Temperature Range	-55 – 125 °C[-67 – 257 °F]

Operation/Application

Shielded	No
Circuit Application	Power & Signal

Industry Standards

Compatible With Agency/Standards Products	DIN, UL
Industry Standard	IEC
Compatible With Approved Standards Products	UL
UL Flammability Rating	UL 94V-0

Packaging Features

Packaging Reel Diameter	330 mm[12.99 in]
Packaging Quantity	280
Packaging Method	Tape & Reel

Product Compliance

For compliance documentation, visit the product page on TE.com>

EU RoHS Directive 2011/65/EU	Compliant
EU ELV Directive 2000/53/EC	Not Yet Reviewed
China RoHS 2 Directive MIIT Order No 32, 2016	有害物质含量符合标准要求 No Restricted Substance(s) Above Threshold
EU REACH Regulation (EC) No. 1907/2006	Current ECHA Candidate List: JUNE 2025 (250) Candidate List Declared Against: JAN 2025 (247) Does not contain REACH SVHC
Halogen Content	Not Yet Reviewed for halogen content
Solder Process Capability	Not reviewed for solder process capability



Product Compliance Disclaimer

This information is provided based on reasonable inquiry of our suppliers and represents our current actual knowledge based on the information they provided. This information is subject to change. The part numbers that TE has identified as EU RoHS compliant have a maximum concentration of 0.1% by weight in homogenous materials for lead, hexavalent chromium, mercury, PBB, PBDE, DBP, BBP, DEHP, DIBP, and 0.01% for cadmium, or qualify for an exemption to these limits as defined in the Annexes of Directive 2011/65/EU (RoHS2). Finished electrical and electronic equipment products will be CE marked as required by Directive 2011/65/EU. Components may not be CE marked. Additionally, the part numbers that TE has identified as EU ELV compliant have a maximum concentration of 0.1% by weight in homogenous materials for lead, hexavalent chromium, and mercury, and 0.01% for cadmium, or qualify for an exemption to these limits as defined in the Annexes of Directive 2000/53/EC (ELV). Regarding the REACH Regulation, the information TE provides on SVHC in articles for this part number is based on the latest European Chemicals Agency (ECHA) ‘Guidance on requirements for substances in articles’ posted at this URL: <https://echa.europa.eu/guidance-documents/guidance-on-reach>

Compatible Parts

TE Part # 354097-E  
SMCB 40 M AB VV 7-03 CL \* 0007 137 E004

TE Part # 354063-E  
SMCB 20 F AB VV 7-03 CL \* H007 137 E002

TE Part # 254417-E  
SMCQ 40 M AB VV 8-23 CL \* H007 137 E005

TE Part # 254590-E  
SMCQ 40 M AB VV 8-13 CL \* H007 137 E005

TE Part # 254539-E  
SMCQ 40 M AB VV 8-03 CL \* H007 137 E005

TE Part # 354062-E  
SMCB 16 F AB VV 7-03 CL \* H007 137 E002

Also in the Series | ERNI SMC

Board-In Connectors(6)

Board-to-Board Headers & Receptacles(79)

Connector Adapters & Connector Savers(41)

PCB Headers & Receptacles(79)



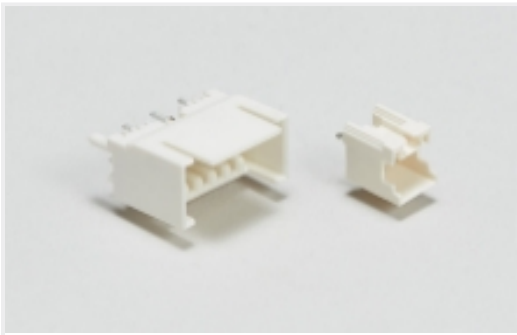
[Pluggable I/O Cable Assemblies\(27\)](#)



[Rectangular Power Connectors\(84\)](#)



[Wire-to-Board Connector Assemblies & Housings\(5\)](#)



[Wire-to-Board Headers & Receptacles \(3\)](#)

Customers Also Bought



TE Part #594751-E  
[STVH15 15 F ZD VV 2 TL 4,3 \\* 197 E 172 T](#)



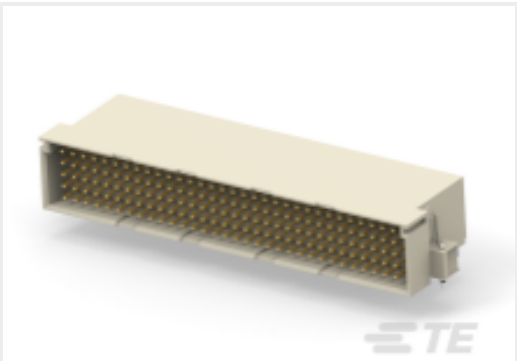
TE Part #816501-SF  
[RN114-1.5-02-6M8](#)



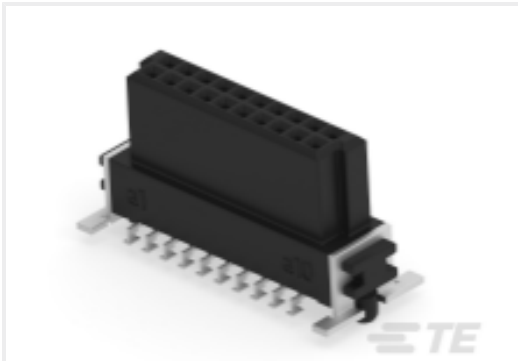
TE Part #254590-E  
[SMCQ 40 M AB VV 8-13 CL \\* H007 137 E005](#)



TE Part #254415-E  
[SMCQ 20 M AB VV 8-23 CL \\* H007 137 E005](#)



TE Part #384295-E  
[STVE 160 M ABCDE VVVV 4-00 0606 \\*\\* 247](#)



TE Part #354063-E  
[SMCB 20 F AB VV 7-03 CL \\* H007 137 E002](#)



TE Part #5-534206-5  
[10 MODII VRT DR CE 100/115 E002](#)



TE Part #826469-4  
[2X4P MOD II SHROUDED HEADER, ST](#)



TE Part #1825095-1  
[TP11CGPC004](#)



TE Part #6123001-1  
[0.8FH,P08H.5,040,30/Sn,TR,SC](#)

Documents

Product Drawings

[SMCB 40 F AB VV 7-03 CL \\* H007 137 E002](#)

German

CAD Files

Customer View Model

[ENG\\_CVM\\_CVM\\_354065-E\\_1.3d\\_stp.zip](#)

English

Customer View Model





[ENG\\_CVM\\_CVM\\_354065-E\\_1.2d\\_dxf.zip](#)

English

**Customer View Model**

[ENG\\_CVM\\_CVM\\_354065-E\\_1.3d\\_igs.zip](#)

English

**3D PDF**

3D

By downloading the CAD file I accept and agree to the [Terms and Conditions](#) of use.

**Datasheets & Catalog Pages**

**Datasheet - ERNI SMC 1.27mm Connectors**

English

**Datasheet - ERNI SMC 1.27mm Connectors**

**Datasheet - ERNI SMC 1.27mm Connectors**

German