

RFPC-SMA17-FN: RP SMA Straight Bulkhead Jack With O-ring, PCB Connector, Rated to IP67/68, 6GHz

Material and Plating:

Insulator A: Teflon

Insulator B: Teflon

Body: Brass, Gold Plated

Pin: Brass, Gold Plated

Gasket: Silicone, Color: Red

O-Ring: Silicone, Color: Red

Washer: Brass, Gold Plated

Nut: Brass, Gold Plated

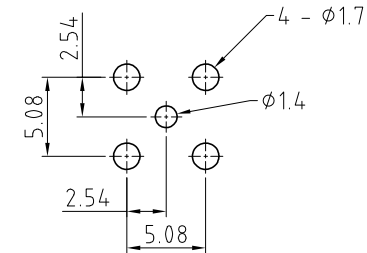
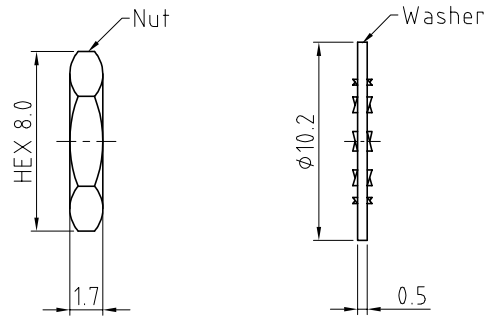
Environmental:

A. Tested to:

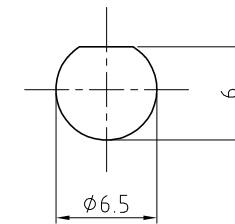
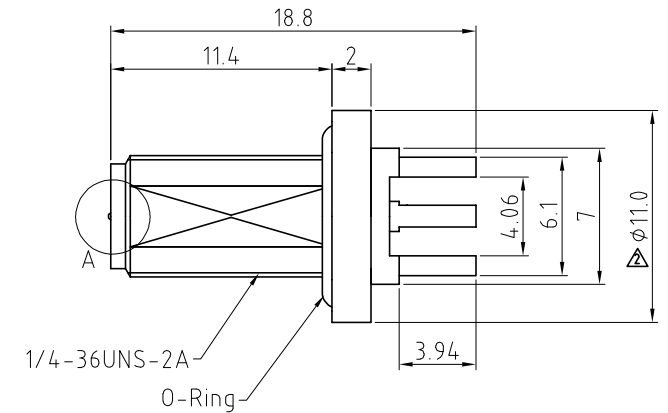
- IP6x - Dust tight - no particle ingress.
- IPx7 Waterproof for 30 minutes up to 1 meter underwater.
- IPx8 Waterproof for 48 hours at 1 meter underwater.

Notes:

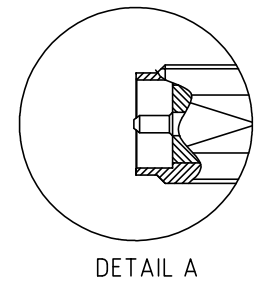
- Packaging Type: Tray.
- Working Frequency Range: DC-6GHz.
- Operating Temperature: -65°C~+165°C.
- Impedance: 50 ohm.



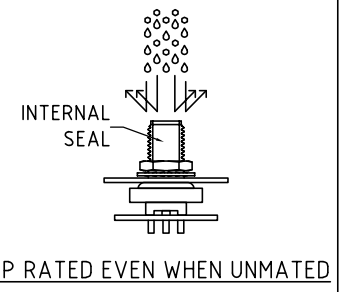
Recommended PCB Hole Layout



Recommended Mounting Hole

Applicable Panel Thickness:
Min. 0.7mm ~ Max. 3.2mm

DETAIL A

HOW TO ORDER
RFPC - SMA17 - FN - XWASHER AND NUT OPTIONS:
BLANK = SEPARATELY PACKED (STANDARD)
A = ALL ASSEMBLED WITH CONNECTOR

REV. DATE & DRN	1.0 30/07/18 - NYW RELEASE
1.1 31/08/18 - NYW	AMEND DIMENSION
1.2 27/07/18 - NYW	AMEND MATERIAL
1.3 18/02/19 - NYW	AMEND DIMENSION
1.4 27/05/19 - NYW	ADD WASHER & NUT OPTIONS.
1.5 14/02/23 - NYW	ADD OPERATING TEMP.
1.6 15/03/24 - NYW	ADD IMPEDANCE
1.7 31/03/24 - CC	ADD PANEL THICKNESS
1.8 24/10/24 - CC	ADD IP RATING VIEW
1.9 12/05/25 - NYW	Change frequency to 6GHz.
	Change operating temp as -65°C~+165°C
	Add GCT logo.
	Add GCT logo.

Scale: NTS	THIRD ANGLE	Unstated Tolerances:
Drawn: CC		.X ±0.2
App'd: XXX	Title SMA PCB Connector	.XX ±0.2
Date: 12 MAY '25	Revision: 1.9	.XXX ±0.2
	Unit: mm	ANGLES N/A

IP Rated
RF Products

www.gct.co

www.gradconn.com

Drawing Number:

RFPC-SMA17-FN

Sheet 1 of 1

Drawing © E and O E

© THIS DRAWING IS CONFIDENTIAL AND MUST NOT BE COPIED OR DISCLOSED WITHOUT WRITTEN CONSENT